

# On a Bicycle without Borders

## A Map of Cycling Trails of Hlučínsko



and Polish Gminy



This material has been released by the project CZ.3.22/2.3/04/11.0/2633  
 JNA KOLE BEZ HRANIC / NA ROZHRANÍ BEZ GRANIC  
 funded from the Operational Programme Cross-border Cooperation Czech Republic - Poland 2007 - 2013.

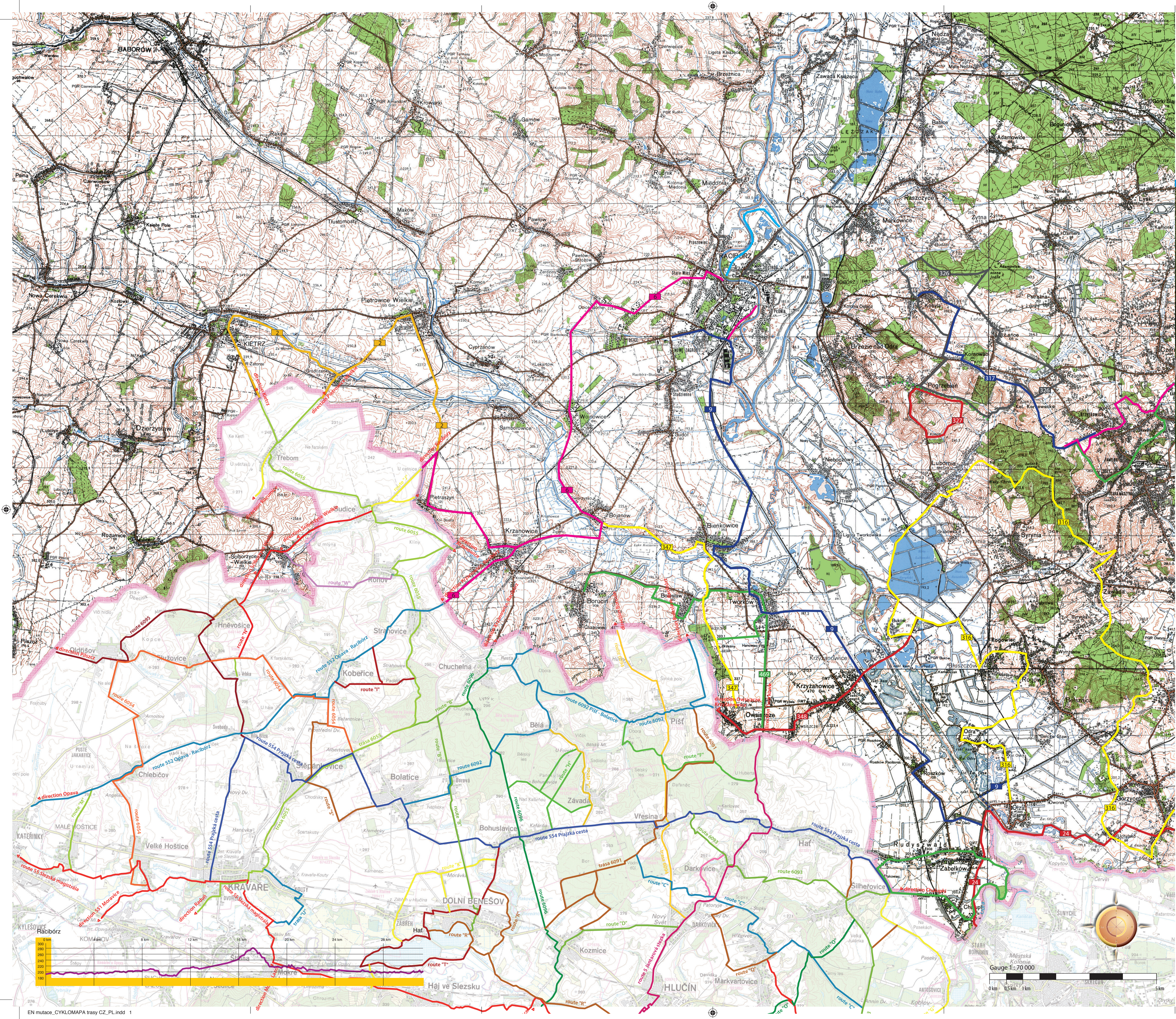


### CYCLING TRAILS

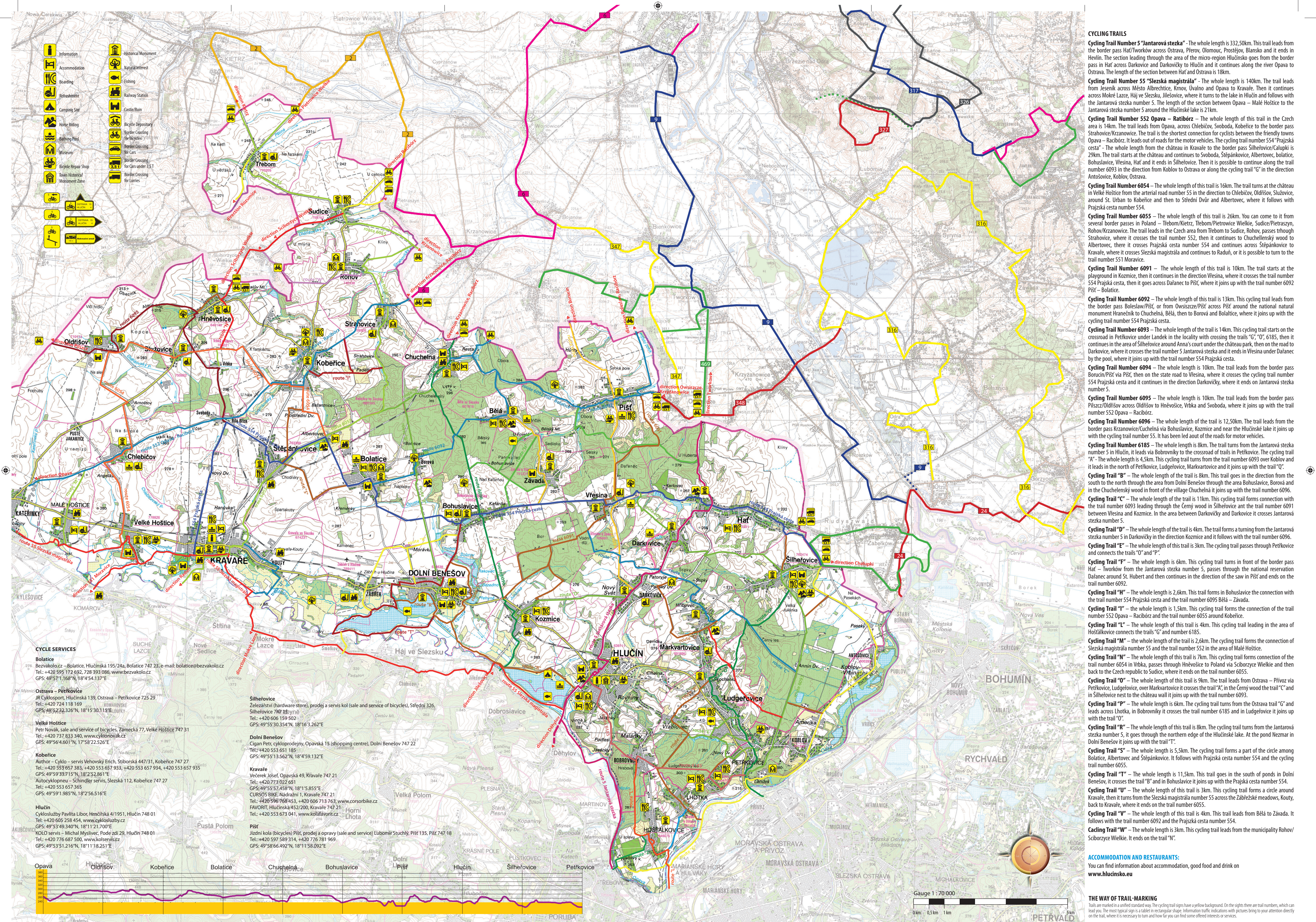
- Cycling Trail Number 2** – The whole length is about 15km. This trail leads from the border pass Třebom/Kietrz and it is on the Czech side connected with a marked line number 6055. In Poland it goes on in the direction to Kietrz, then to Grodzanki, then it is possible to turn back to the Czech republic or to continue in the direction to Pietrowice Wielkie and from here across Pietraszyn to Krzanowice, where it is connected with the cycling trail number 6 Opava – Racibórz.
- Cycling Trail Number 6** – The whole length is about 18km. The trail leads from the border pass Strahovice/Krzanowice, in the Czech republic it goes on the region cycling trail number 553 Opava – Racibórz.
- Cycling Trail Number 347** – The whole length is about 9km. This cycling trail starts on the trail number 6 in the municipality Bojanow, then it continues across Bienkowice around Boleslaw to Ewsiwice, where you can turn back to the Czech republic to the trail number 6092 to the municipality Pišť.
- Cycling Trail Number 348** – The whole length is about 8km. This cycling trail connected in Poland in front of Krzyżanowice the cycling trail number 316 with the cycling trail number 6092 in the municipality Pišť in the Czech republic.
- Cycling Trail Number 9** – The whole length is about 22km. This cycling trail starts in the city Racibórz on the trail number 6 and it goes on in south-eastern direction to Bienkowice, Tworków, Krzyżanowice, Roszków and over Zabelków it ends on the border to the Czech republic. Cycling trail number 460 – The whole length is about 12km. The trail starts in the municipality Borucin and goes through Boleslaw, Tworków and behind the municipality Owsiszce it turns to the municipality Hat.
- Cycling Trail "Mała zieleń"** – The whole length is about 11km. The line starts and ends in Silherovice. It goes through Rudyśwald along the border of the both states in the direction to Chalupki and then back to Silherovice.
- Cycling Trail Number 316** – The whole length of a part of the trail in the division Olza – Gorzycki is about 40km. It starts from the trail number 24 by the municipality Olza, then it continues across the municipalities Odra and Rogów, then in the west of the water area to Lubomir through a wood over the municipality Syrynia back in the south direction around Gorzyce to the border of the Czech republic – in Gorzycki.
- Cycling Trail Number 327** – "Mała červená" – The length of this trail is about 4km, it is a small circle by the municipality Pogrzebien.
- Cycling Trail Number 317** – The length of this trail is about 10km. It starts in the municipality Kobyla, then it goes through Kornowac and it ends in Psów, where it follows with to two other cycling trails.
- Cycling Trail red Pszów** – It follows with the trail number 317, passes through the town Rydlutowy in the north-eastern direction. The cycling trail green Pszów – The length is about 10km. It connected the towns Pszów and Rydlutowy.
- Cycling Trail Number 24** – The length of a part of this trail in the division Chalupki – Gorzyce is about 10km. The trail starts on the border pass in Chalupki, then it continues in east of the municipality Zabelków along the state border in the direction Olza to the town Gorzyce.

**FOR MORE INFORMATIONS ABOUT POLISH GMINY VISIT:**  
[www.kietrz.pl](http://www.kietrz.pl)  
[www.krzanowice.pl](http://www.krzanowice.pl)  
[www.krzyzanowice.pl](http://www.krzyzanowice.pl)  
[www.pietrowicewielkie.pl](http://www.pietrowicewielkie.pl)

**THE WAY OF TRAIL-MARKING**  
 Trails are marked in a unified standard way. The cycling trail signs have a yellow background. On the signs there are trail numbers, which can lead you. The most typical sign is a table in rectangular shape. Information traffic indications with pictures bring to your attention directly on the trail, where it is necessary to turn and how far you can find some offered interests or services.







- Information
- Accommodation
- Boarding
- Refreshment
- Camping Site
- Horse Riding
- Bathing Pool
- Museum
- Bicycle Repair Shop
- Town Historical Monument Zone
- Historical Monument
- Natural Interest
- Fishing
- Railway Station
- Castle/Barricade
- Bicycle Depository
- Border Crossing for Bicycles
- Border Crossing for Cars
- Border Crossing for Cars under 3.5 T
- Border Crossing for Lorries

**CYCLING TRAILS**

**Cycling Trail Number 5 "Jantarová stezka"** - The whole length is 332,50km. This trail leads from the border pass Hat/Tworków across Ostrava, Přerov, Olomouc, Prostějov, Blansko and it ends in Hevlín. The section leading through the area of the micro-region Hlučín goes from the border pass in Hat across Darkovice and Darkovičky to Hlučín and it continues along the river Opava to Ostrava. The length of the section between Hat and Ostrava is 18km.

**Cycling Trail Number 55 "Slezská magistrála"** - The whole length is 140km. The trail leads from Jeseník across Město Albrechtice, Krnov, Úvalno and Opava to Kravaře. Then it continues across Mokré Lazce, Háj ve Slezsku, Jiřetice, where it turns to the lake in Hlučín and follows with the Jantarová stezka number 5. The length of the section between Opava – Malé Hoštice to the Jantarová stezka number 5 around the Hlučínské lake is 21km.

**Cycling Trail Number 552 Opava – Ratibórz** - The whole length of this trail in the Czech area is 14km. The trail leads from Opava, across Chlebičov, Svoboda, Koberce to the border pass Strahovice/Kranovice. The trail is the shortest connection for cyclists between the friendly towns Opava – Racibórz. It leads out of roads for the motor vehicles. The cycling trail number 554 "Pražská cesta" - The whole length from the chateau in Kravaře to the border pass Šilheřovice/Čalupki is 29km. The trail starts at the chateau and continues to Svoboda, Štěpánovice, Albertovec, Bolatic, Bohuslavice, Vřesina, Hat and it ends in Šilheřovice. Then it is possible to continue along the trail number 6093 in the direction from Koblou to Ostrava or along the cycling trail "G" in the direction Antošovice, Koblou, Ostrava.

**Cycling Trail Number 6054** - The whole length of this trail is 16km. The trail turns at the chateau in Velké Hoštice from the arterial road number 55 in the direction to Chlebičov, Oldříšov, Služovice, around St. Urban to Kobačice and then to Střední Dvůr and Albertovec, where it follows with Pražská cesta number 554.

**Cycling Trail Number 6055** - The whole length of this trail is 26km. You can come to it from several border passes in Poland – Trebom/Kietrz, Trebom/Pietrowice Wielkie, Sudice/Pietraszyn, Rohov/Krzanowice. The trail leads in the Czech area from Trebom to Sudice, Rohov, passes through Strahovice, where it crosses the trail number 552, then it continues to Chuchelnský wood to Albertovec, there it crosses Pražská cesta number 554 and continues across Štěpánovice to Kravaře, where it crosses Slezská magistrála and continues to Raduň, or it is possible to turn to the trail number 551 Moravice.

**Cycling Trail Number 6091** - The whole length of this trail is 10km. The trail starts at the playground in Kozmice, then it continues in the direction Vřesina, where it crosses the trail number 554 Pražská cesta, then it goes across Daňanec to Píšť, where it joins up with the trail number 6092 Píšť – Bolatic.

**Cycling Trail Number 6092** - The whole length of this trail is 13km. This cycling trail leads from the border pass Boleslav/Píšť, or from Owsiszce/Píšť across Píšť around the national natural monument Hrančnick to Chuchelná, Bělá, then to Borová and Bolatic, where it joins up with the cycling trail number 554 Pražská cesta.

**Cycling Trail Number 6093** - The whole length of the trail is 14km. This cycling trail starts on the crossroad in Petkovic under Landek in the locality with crossing the trails "G", "O", 6185, then it continues in the area of Šilheřovice around Anna's court under the chateau park, then on the road to Darkovice, where it crosses the trail number 5 Jantarová stezka and it ends in Vřesina under Daňanec by the pool, where it joins up with the trail number 554 Pražská cesta.

**Cycling Trail Number 6094** - The whole length is 10km. The trail leads from the border pass Boručin/Píšť via Píšť, then on the state road to Vřesina, where it crosses the cycling trail number 554 Pražská cesta and it continues in the direction Darkovičky, where it ends on Jantarová stezka number 5.

**Cycling Trail Number 6095** - The whole length is 10km. The trail leads from the border pass Pilszcz/Oldříšov across Oldříšov to Hněvošice, Vrbka and Svoboda, where it joins up with the trail number 552 Opava – Racibórz.

**Cycling Trail Number 6096** - The whole length of the trail is 12,50km. The trail leads from the border pass Krzanowice/Chuchelná via Bohuslavice, Kozmice and near the Hlučínské lake it joins up with the cycling trail number 55. It has been led out of the roads for motor vehicles.

**Cycling Trail Number 6185** - The whole length is 8km. The trail turns from the Jantarová stezka number 5 in Hlučín, it leads via Bobrovniky to the crossroad of trails in Petkovic. The cycling trail "A" - The whole length is 4,5km. This cycling trail turns from the trail number 6093 over Koblou and it leads in the north of Petkovic, Ludgerovice, Markvartovice and it joins up with the trail "O".

**Cycling Trail "B"** - The whole length of the trail is 8km. This trail goes in the direction from the south to the north through the area from Dolní Benešov through the area Bohuslavice, Borová and in the Chuchelnský wood in front of the village Chuchelná it joins up with the trail number 6096.

**Cycling Trail "C"** - The whole length of the trail is 11km. This cycling trail forms connection with the trail number 6093 leading through the Černý wood in Šilheřovice and the trail number 6091 between Vřesina and Kozmice. In the area between Darkovičky and Darkovice it crosses Jantarová stezka number 5.

**Cycling Trail "D"** - The whole length of the trail is 4km. The trail forms a turning from the Jantarová stezka number 5 in Darkovičky in the direction Kozmice and it follows with the trail number 6096.

**Cycling Trail "E"** - The whole length of this trail is 3km. The cycling trail passes through Petkovic and connects the trails "O" and "P".

**Cycling Trail "F"** - The whole length is 6km. This cycling trail turns in front of the border pass Hat – Tworków from the Jantarová stezka number 5, passes through the national reservation Daňanec around St. Hubert and then continues in the direction of the saw in Píšť and ends on the trail number 6092.

**Cycling Trail "H"** - The whole length is 2,6km. This trail forms in Bohuslavice the connection with the trail number 554 Pražská cesta and the trail number 6095 Bělá – Závada.

**Cycling Trail "I"** - the whole length is 1,5km. This cycling trail forms the connection of the trail number 552 Opava – Racibórz and the trail number 6055 around Kobačice.

**Cycling Trail "L"** - The whole length of this trail is 4km. This cycling trail leading in the area of Hošťálkovic connects the trails "O" and number 6185.

**Cycling Trail "M"** - the whole length of the trail is 2,6km. The cycling trail forms the connection of Slezská magistrála number 55 and the trail number 552 in the area of Malé Hoštice.

**Cycling Trail "N"** - The whole length of this trail is 7km. This cycling trail forms connection of the trail number 6054 in Vrbka, passes through Hněvošice to Poland via Sborzyce Wielkie and then back to the Czech republic to Sudice, where it ends on the trail number 6055.

**Cycling Trail "O"** - The whole length of this trail is 9km. The trail leads from Ostrava – Přívov via Petkovic, Ludgerovice, over Markvartovice it crosses the trail "A", in the Černý wood the trail "C" and in Šilheřovice nest to the chateau wall it joins up with the trail number 6093.

**Cycling Trail "P"** - The whole length is 6km. The cycling trail turns from the Ostrava trail "G" and leads across Lhotka, in Bobrovniky it crosses the trail number 6185 and in Ludgerovice it joins up with the trail "O".

**Cycling Trail "R"** - The whole length of this trail is 8km. The cycling trail turns from the Jantarová stezka number 5, it goes through the northern edge of the Hlučínské lake. At the pond Nezmar in Dolní Benešov it joins up with the trail "T".

**Cycling Trail "S"** - The whole length is 5,5km. The cycling trail forms a part of the circle among Bolatic, Albertovec and Štěpánovice. It follows with Pražská cesta number 554 and the cycling trail number 6055.

**Cycling Trail "T"** - The whole length is 11,5km. This trail goes in the south of ponds in Dolní Benešov, it crosses the trail "B" and in Bohuslavice it joins up with the Pražská cesta number 554.

**Cycling Trail "U"** - The whole length of this trail is 3km. This cycling trail forms a circle around Kravaře, then it turns from the Slezská magistrála number 55 across the Zábřežské meadows, Kouty, back to Kravaře, where it ends on the trail number 6055.

**Cycling Trail "V"** - The whole length of this trail is 4km. This trail leads from Bělá to Závada. It follows with the trail number 6092 and the Pražská cesta number 554.

**Cycling Trail "W"** - The whole length is 3km. This cycling trail leads from the municipality Rohov/Sborzyce Wielkie. It ends on the trail "N".

**CYCLE SERVICES**

**Bolatic**  
 Bezvako.cz – Bolatic, Hlučínská 195/24a, Bolatic 747 23, e-mail: bolatic@bezvako.cz  
 Tel.: +420 595 172 692, 728 393 086, www.bevzako.cz  
 GPS: 49°57'1.168"N, 18°4'54.137"E

**Ostrava – Petkovic**  
 JR Cykloport, Hlučínská 139, Ostrava – Petkovic 725 29  
 Tel.: +420 724 118 169  
 GPS: 49°52'32.326"N, 18°15'30.115"E

**Velké Hoštice**  
 Petr Novák, sale and service of bicycles, Zámecká 77, Velké Hoštice 747 31  
 Tel.: +420 737 833 340, www.cykloklub.cz  
 GPS: 49°56'4.601"N, 17°58'22.526"E

**Kobačice**  
 Autor – Cyklo – servis Věhovský Erich, Stiborská 447/31, Kobačice 747 27  
 Tel.: +420 553 657 383, +420 553 657 933, +420 553 657 934, +420 553 657 935  
 GPS: 49°59'33.715"N, 18°2'52.861"E

**Autocyklonép – Schindler servis, Slezská 112, Kobačice 747 27**  
 Tel.: +420 553 657 365  
 GPS: 49°59'1.985"N, 18°2'56.516"E

**Hlučín**  
 Cykloklub Pavla Libor, Hrnčířská 4/1951, Hlučín 748 01  
 Tel.: +420 605 258 454, www.cykloklub.cz  
 GPS: 49°53'49.340"N, 18°11'21.700"E

**KOLO servis - Michal Myslivec, Pode zdi 29, Hlučín 748 01**  
 Tel.: +420 776 687 500, www.koloservis.cz  
 GPS: 49°53'51.216"N, 18°11'18.251"E

**Šilheřovice**  
 Železářství (hardware store), prodej a servis kol (sale and service of bicycles), Střední 326, Šilheřovice 747 15  
 Tel.: +420 606 159 502  
 GPS: 49°55'30.354"N, 18°16'3.262"E

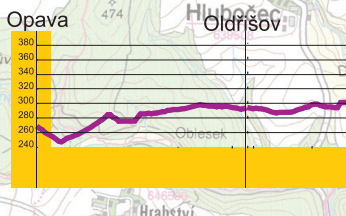
**Dolní Benešov**  
 Cigan Petr, cykloprodejny, Opavská 15 (shopping centre), Dolní Benešov 747 22  
 Tel.: +420 553 651 185  
 GPS: 49°55'13.562"N, 18°4'59.132"E

**Kravaře**  
 Vecerek Josef, Opavská 49, Kravaře 747 21  
 Tel.: +420 773 022 651  
 GPS: 49°55'57.458"N, 18°15'8.555"E

**CURSOS BIKE, Nádražní 1, Kravaře 747 21**  
 Tel.: +420 596 768 453, +420 606 713 763, www.corsosbike.cz

**FAVORIT, Hlučínská 452/200, Kravaře 747 21**  
 Tel.: +420 553 673 041, www.kolafavorit.cz

**Píšť**  
 Jazdní kola (bicycles) Píšť, prodej a opravy (sale and service) Lubomír Stuchlý, Píšť 135, Píšť 747 18  
 Tel.: +420 597 589 314, +420 776 781 969  
 GPS: 49°58'66.492"N, 18°11'58.092"E



Scale 1 : 70 000



**ACCOMMODATION AND RESTAURANTS:**

You can find information about accommodation, good food and drink on [www.hlucinsko.eu](http://www.hlucinsko.eu)

**THE WAY OF TRAIL-MARKING**

Trails are marked in a uniform standard way. The cycling trail signs have a yellow background. On the signs there are trail numbers, which can lead you. The most typical sign is a table in rectangular shape. Information traffic indications with pictures bring to your attention directly on the trail, where it is necessary to turn and how far you can find some offed interests or services.